

LED ENCLOSURE LAMP

LED 021 | 02110.0-30



The optimum lamp for enclosures: the compact and powerful Varioline LED enclosure lamp. With up to 1700 Lm luminous flux for good visibility and work safety in large enclosures. The glare-free, 360° rotatable light body is equipped with mid-power LEDs. Long, maintenance-free service life of 60,000 hours.

- Switching options: PIR motion detector, on/off switch, without switch (prepared for external switch)
- Magnet or screw fixing
- Integrated power unit, daisy chain
- Available in two lengths: 400 and 600 mm
- Emitted luminous color 6,500 K (daylight); angle of radiation 120°



OVERVIEW TECHNICAL DATA

Device type	LED enclosure lamps
Switch	Motion detector
Illuminant	LED
Protection class	II
Protection type	IP20
Casing	Plastic, translucent
AC/DC	AC
Operating voltage	100 V - 240 V
Frequency	50;60 Hz
Power consumption	11 W
Luminous colour	6500 K
Luminous flux	1080 Lm
Service life	>60000 h
Operating temperature	-40 °F - 104 °F
Operating humidity	≤90 % rF
Storage humidity	≤90 % rF
Storage temperature	-40 °F - 185 °F
Connection type	Connector plug
Connection	2-pole connector with snap lock
Mounting	Magnet
Height	1.7 in
Width	1.7 in
Depth	15.7 in
Weight	7.1 oz

Item number accessories 1	244359
Item number accessories 2	244357
Item number accessories 3	264057
Item number accessories 4	264058
Accessory 1	Extension cable 2 x AWG 16 with female and male connectors - through-wiring, 1 m
Accessory 2	Connection cable 2 x AWG 16 with female connector, 2 m
Accessory 3	Separate female connector for cable connection
Accessory 4	Separate male connector for cable connection
Note	The light must not be used for household lighting; A rotation angle of 360° ensures optimally adjustable illumination.

CONNECTION CABLE WITH FEMALE CONNECTOR AND OPEN END

Article number	usage	color	AC/DC	design	Depth
244356	for entrance side	Female connector: white Cable: white	AC	Connection cable 2 x 1.5 mm ² with female connector	78.7 in
244357	for entrance side	Female connector: white Cable: white	AC	Connection cable 2 x AWG 15 with female connector	78.7 in

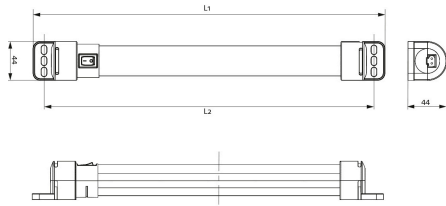
EXTENSION CABLE WITH FEMALE AND MALE CONNECTORS FOR DAISY CHAIN WIRING

Article number	usage	color	AC/DC	design	Depth
244358	Daisy chain	Female/male connectors: white Cable: white	DC	Extension cable 2 x 1.5 mm ² with female and male connectors	39.4 in
244359	Daisy chain	Female/male connectors: white Cable: white	DC	Extension cable 2 x AWG 16 with female and male connectors	39.4 in

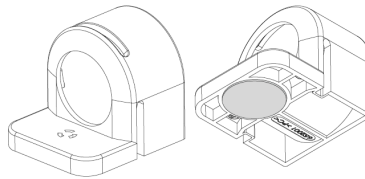
FEMALE/MALE CONNECTORS

Article number	usage	color	AC/DC	design	cable_cross_section
264057	for entrance side	white	AC	Female connector	0.5-2.5 mm ² (AWG 14-20)
264058	for output side	white	AC	Male connector	0.5-2.5 mm ² (AWG 14-20)

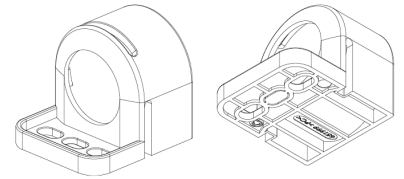
TECHNICAL DRAWINGS



Magnet fixing



Screw fixing



Cable accessories



1 Connection cable, Art. No. 244356



2 Extension cable, Art. No. 244358

Connector accessories

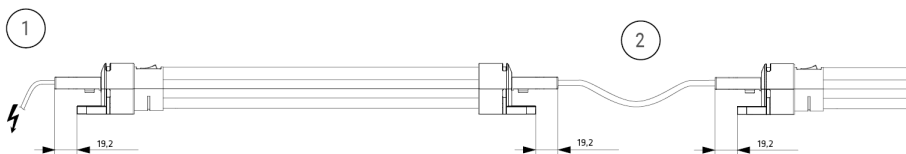


Female connector, Art. No. 264057



Male connector, Art. No. 264058

Connection example



Daisy chain application with max. 8 lamps conveniently connected via connection plugs. The snap lock connectors ensure a stable electrical connection even if subjected to heavy vibration. The example shows a AC 230 V application, using the following cables: connection cable with female connector, Art. No. 244356 (1); daisy chain extension cable with 2 connectors, Art. No. 244358 (2).

Female/male connectors are also available to assemble cables in non-standard lengths.