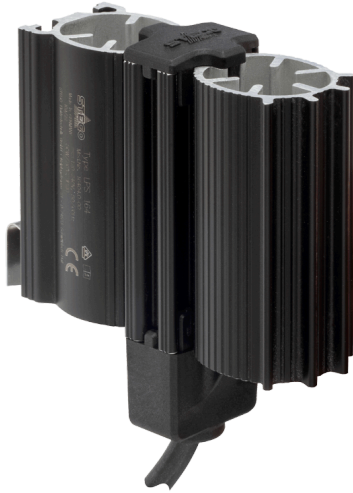


ENCLOSURE HEATER

LPS 164 | 16401.9-00



Compact loop heater based on PTC heating elements for heating casings with electrical or electronic components. The heating can be used to prevent both low temperatures and condensation on built-in components. The design of the aluminum profile creates a chimney effect, which ensures even temperature distribution in the enclosure.

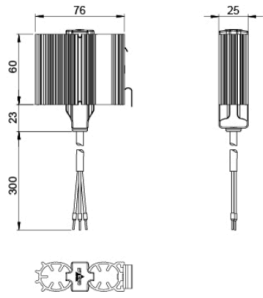
- Quick installation thanks to clip fixing
- Dynamic heating through PTC technology
- Heater body in loop design for optimum temperature distribution
- Wide voltage range
- Worldwide approvals



OVERVIEW TECHNICAL DATA

Device type	Convection heaters
Protection class	I
Protection type	IP20
Heating element	PTC resistor (PTC)
Heater element	Aluminium profile, anodised
AC/DC	AC;DC
Operating voltage	120 V - 240 V
Inrush current	2 A
Frequency	50;60 Hz
Heating capacity	20 W
Operating temperature	-45 °C - 70 °C
Operating humidity	≤90 % RH
Storage humidity	≤90 % RH
Storage temperature	-45 °C - 70 °C
Connection type	Connection cable
Connection	3 x 0.5 mm ² x 300 mm cable
Mounting	Clip for 35 mm DIN rail
Installation position	Airflow direction "in" vertical / connection at the bottom
Height	83 mm
Width	25 mm
Depth	76 mm
Weight	200 g
Note	Heating capacity measured at +20 °C (+68 °F) ambient temperature.

TECHNICAL DRAWINGS



Connection example

