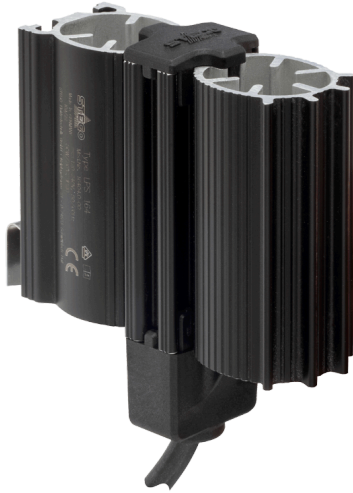


ENCLOSURE HEATER

LPS 164 | 16402.0-00



Compact loop heater based on PTC heating elements for heating casings with electrical or electronic components. The heating can be used to prevent both low temperatures and condensation on built-in components. The design of the aluminum profile creates a chimney effect, which ensures even temperature distribution in the enclosure.

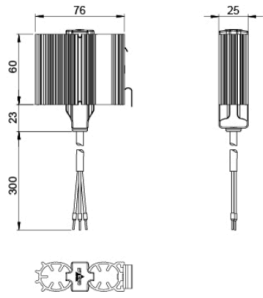
- Quick installation thanks to clip fixing
- Dynamic heating through PTC technology
- Heater body in loop design for optimum temperature distribution
- Wide voltage range
- Worldwide approvals



OVERVIEW TECHNICAL DATA

| | |
|-----------------------|---|
| Device type | Convection heaters |
| Protection class | I |
| Protection type | IP20 |
| Heating element | PTC resistor (PTC) |
| Heater element | Aluminium profile, anodised |
| AC/DC | AC;DC |
| Operating voltage | 120 V - 240 V |
| Inrush current | 2 A |
| Frequency | 50;60 Hz |
| Heating capacity | 30 W |
| Operating temperature | -45 °C - 70 °C |
| Operating humidity | ≤90 % RH |
| Storage humidity | ≤90 % RH |
| Storage temperature | -45 °C - 70 °C |
| Connection type | Connection cable |
| Connection | 3 x 0.5 mm ² x 300 mm cable |
| Mounting | Clip for 35 mm DIN rail |
| Installation position | Airflow direction "in" vertical / connection at the bottom |
| Height | 83 mm |
| Width | 25 mm |
| Depth | 76 mm |
| Weight | 200 g |
| Note | Heating capacity measured at +20 °C (+68 °F) ambient temperature. |

TECHNICAL DRAWINGS



Connection example

