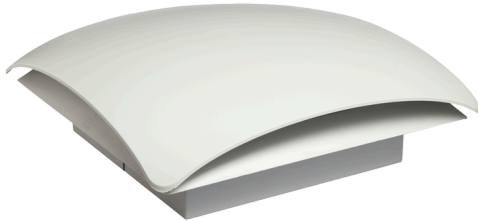


ROOF FILTER FAN

RFP 018 | 01860.0-02

The roof filter fan ensures uniform air circulation in the enclosure or casing. The resulting air flow cools the electrical components. Note: The application of roof filter fans always requires pressure compensation. Either in combination with an inlet filter or an inlet filter fan.



- Low installation depth
- Quiet in operation with high air flow rate
- High operational reliability
- Time-saving installation and filter mat replacement



OVERVIEW TECHNICAL DATA

Device type	Accessories
Protection class	I
Protection type	IP32
Filter material	Plastic fibre with progressive structure
Filter mat	G3
Casing	Plastic to UL94 V-0, light gray; UV light resistant to UL746C (f1)
AC/DC	AC
Operating voltage	120 V
Frequency	60 Hz
Power consumption	60 W
Axial fan	Fan body aluminium, rotor plastic
Cooling airflow rate blowing	203.1 cfm
Average emission sound pressure level	55 dB(A)
Service life	>50000 h
Operating temperature	14 °F - 158 °F
Operating humidity	≤90 % rF
Storage humidity	≤90 % rF
Storage temperature	-40 °F - 158 °F
Torque	0.8 Nm max.
Connection	3-pole clamp 2.5 mm ² max.
Height	4.9 in
Width	13.9 in
Depth	13.9 in
Installation depth	2 in
Weight	116.4 oz

Mounting cut-out	246 x 246 in
Item number accessories 1	11860.0-00
Item number accessories 2	08613.0-01
Accessory 1	Roof exit filter RFP 018
Accessory 2	Replacement filter mat FM 086
Note	The roof filter fan must always be operated in combination with an inlet filter (e.g. Art. 11803.0-00) or an inlet filter fan (e.g. Art. No. 01803.0-00) for pressure compensation in the enclosure.

FILTER MAT BAG

Article number	packaging_size	Filter mat	Mounting cut-out
08613.0-01	3 Stück	ISO coarse 55 % according to ISO 16890 (G3), grav. Initial gravimetric arrestance 57 %	282x282 in

ROOF EXIT FILTER

Article number	packaging_size	Filter mat	Installation depth	Weight	Mounting cut-out
11860.0-00	3 Stück	ISO coarse 55 % according to ISO 16890 (G3), grav. Initial gravimetric arrestance 57 %	0.4 in	35.3 oz	246x246 in

TECHNICAL DRAWINGS

